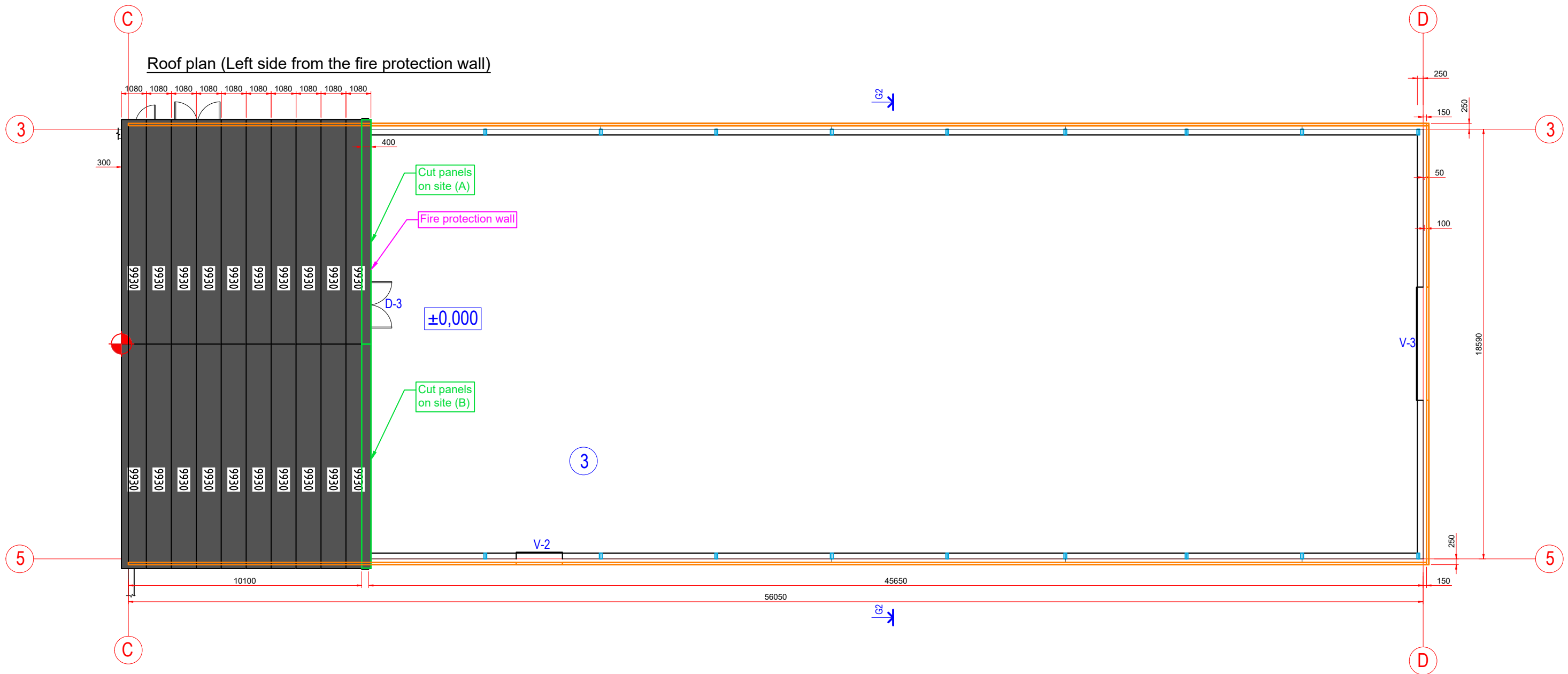


Roof plan (Left side from the fire protection wall)

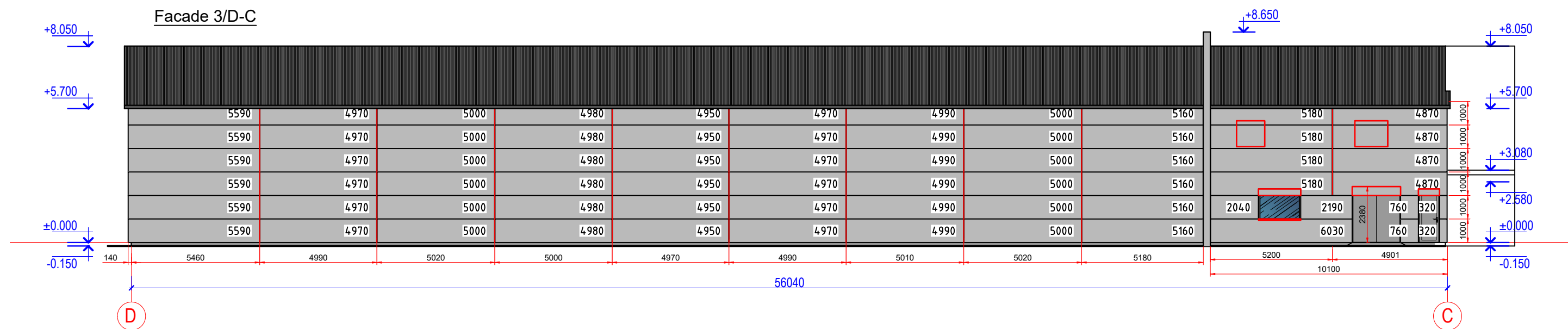
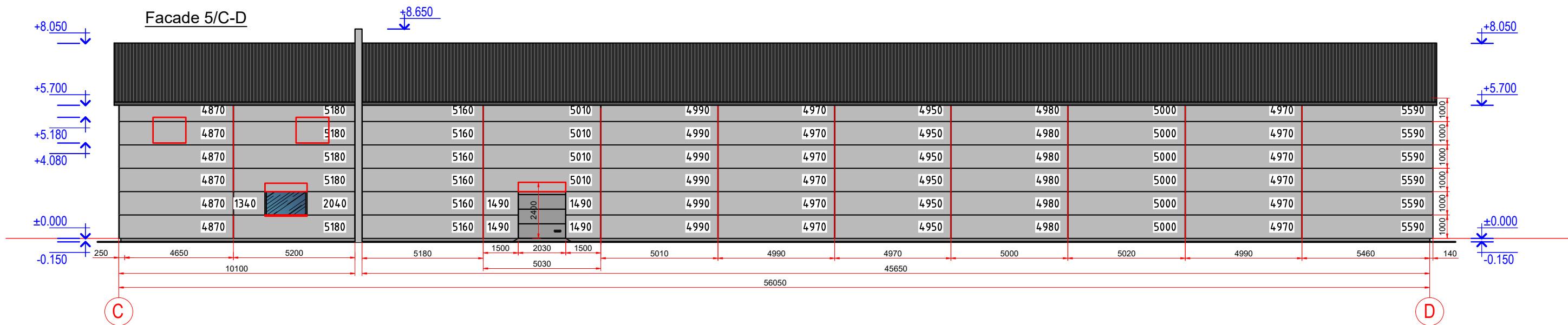


- Cut panels on site!
- Use panels cutout to fill the gap!
- ⊗ - Panels mounting starting point

Panel's designation:

	S1000	S-Wall PIR 100mm PE/PE L/L 0,5/0,5 RAL7040/9010	790,42 m2
	J1080	S-Roof PIR 140mm PE/PE T/L 0,5/0,5 RAL7016/9010	1164,26 m2



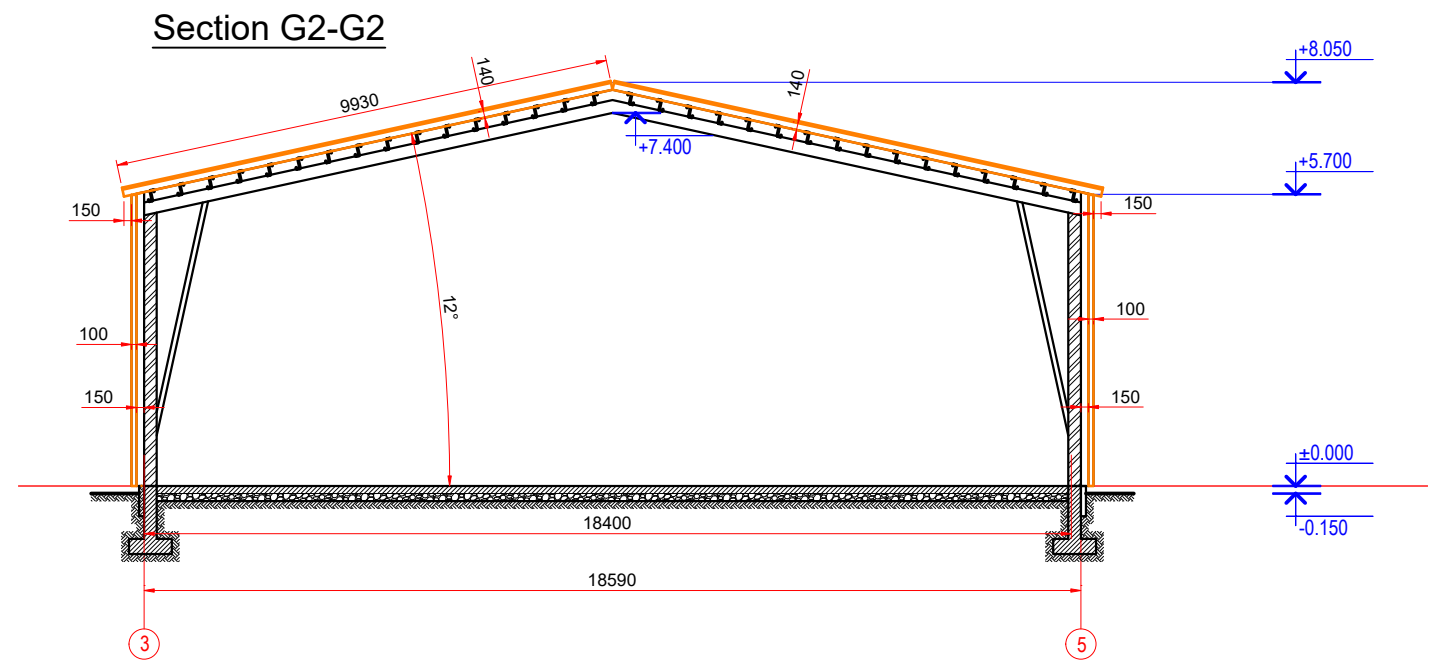
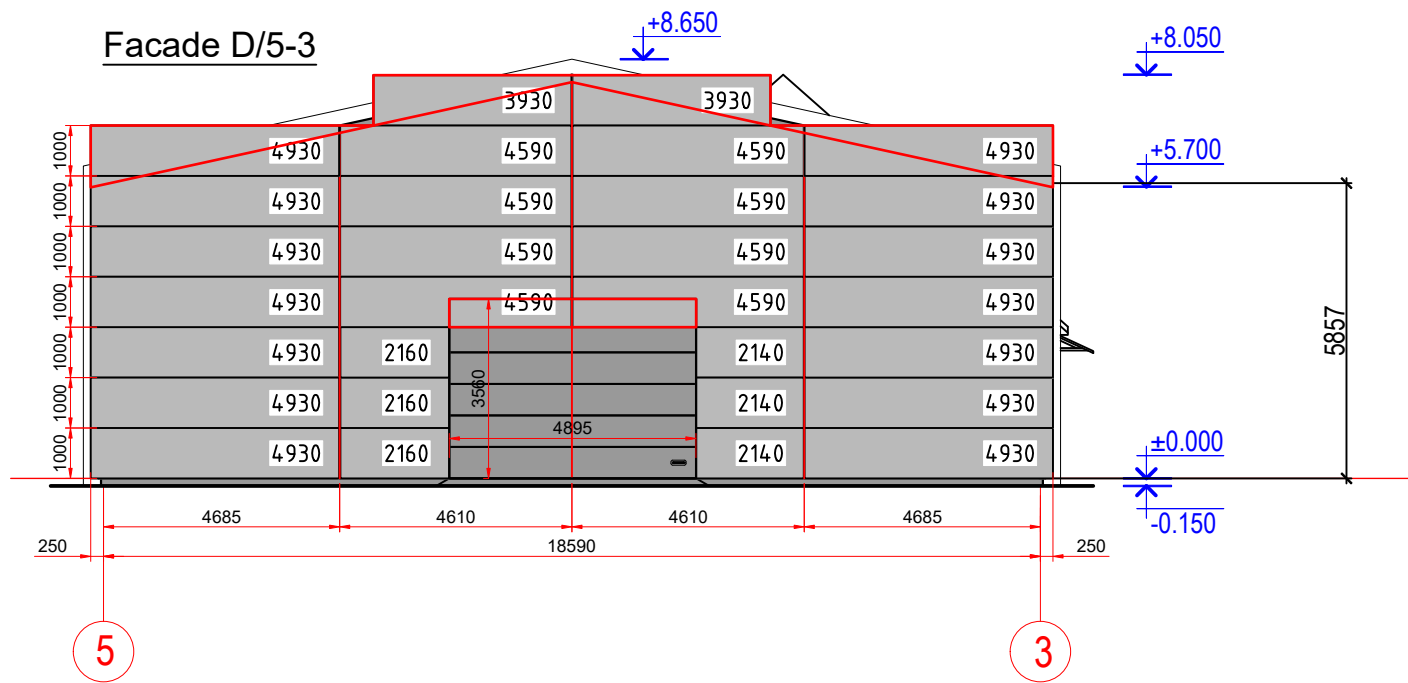


- Cut panels on site!
- Use panels cutout to fill the gap!
- ⊙ - Panels mounting starting point

Panel's designation:

		S1000	S-Wall PIR 100mm PE/PE L/L 0,5/0,5 RAL7040/9010	790,42 m2
		J1080	S-Roof PIR 140mm PE/PE T/L 0,5/0,5 RAL7016/9010	1164,26 m2





- Cut panels on site!
- Use panels cutout to fill the gap!
- Panels mounting starting point

Panel's designation:

	S1000	S-Wall PIR 100mm PE/PE L/L 0,5/0,5 RAL7040/9010	790,42 m2
	J1080	S-Roof PIR 140mm PE/PE T/L 0,5/0,5 RAL7016/9010	1164,26 m2

Table by selection									
No.	Description	Thick.	Length	Qty	Coating (ext./int.)	Thick. (ext./int.)	Color (ext./int.)	Profile (ext./int.)	Area
2	S-Wall PIR -1000	100	6030	1	PE/PE	0,5/0,5	RAL7040/RAL9010	L/L	6.03
3	S-Wall PIR -1000	100	5590	12	PE/PE	0,5/0,5	RAL7040/RAL9010	L/L	67.08
4	S-Wall PIR -1000	100	5180	9	PE/PE	0,5/0,5	RAL7040/RAL9010	L/L	46.62
5	S-Wall PIR -1000	100	5160	12	PE/PE	0,5/0,5	RAL7040/RAL9010	L/L	61.92
6	S-Wall PIR -1000	100	5010	4	PE/PE	0,5/0,5	RAL7040/RAL9010	L/L	20.04
7	S-Wall PIR -1000	100	5000	18	PE/PE	0,5/0,5	RAL7040/RAL9010	L/L	90.00
8	S-Wall PIR -1000	100	4990	12	PE/PE	0,5/0,5	RAL7040/RAL9010	L/L	59.88
9	S-Wall PIR -1000	100	4980	12	PE/PE	0,5/0,5	RAL7040/RAL9010	L/L	59.76
10	S-Wall PIR -1000	100	4970	24	PE/PE	0,5/0,5	RAL7040/RAL9010	L/L	119.28
11	S-Wall PIR -1000	100	4950	12	PE/PE	0,5/0,5	RAL7040/RAL9010	L/L	59.40
12	S-Wall PIR -1000	100	4930	14	PE/PE	0,5/0,5	RAL7040/RAL9010	L/L	69.02
13	S-Wall PIR -1000	100	4870	10	PE/PE	0,5/0,5	RAL7040/RAL9010	L/L	48.70
14	S-Wall PIR -1000	100	4590	8	PE/PE	0,5/0,5	RAL7040/RAL9010	L/L	36.72
15	S-Wall PIR -1000	100	3930	2	PE/PE	0,5/0,5	RAL7040/RAL9010	L/L	7.86
16	S-Wall PIR -1000	100	2190	1	PE/PE	0,5/0,5	RAL7040/RAL9010	L/L	2.19
17	S-Wall PIR -1000	100	2160	3	PE/PE	0,5/0,5	RAL7040/RAL9010	L/L	6.48
18	S-Wall PIR -1000	100	2140	3	PE/PE	0,5/0,5	RAL7040/RAL9010	L/L	6.42
19	S-Wall PIR -1000	100	2040	2	PE/PE	0,5/0,5	RAL7040/RAL9010	L/L	4.08
20	S-Wall PIR -1000	100	1490	4	PE/PE	0,5/0,5	RAL7040/RAL9010	L/L	5.96
21	S-Wall PIR -1000	100	1340	1	PE/PE	0,5/0,5	RAL7040/RAL9010	L/L	1.34
22	S-Wall PIR -1000	100	760	2	PE/PE	0,5/0,5	RAL7040/RAL9010	L/L	1.52
23	S-Wall PIR -1000	100	320	2	PE/PE	0,5/0,5	RAL7040/RAL9010	L/L	0.64
							Total:	168	780.94

Table by selection									
No.	Description	Thick.	Length	Qty	Coating (ext./int.)	Thick. (ext./int.)	Color (ext./int.)	Profile (ext./int.)	Area
1	S-Roof PIR -1080	140	9930	86	PE/PE	0,5/0,5	RAL7016/RAL9010	L/L	922.30
							Total:	86	922.30